

FAST™ Label Data Sheet



FAST™ Label is a complete software solution for automated labeling, verification and sortation. The **FAST™** Label control system integrates bar code readers, dimensioning, weighing, print engines, applicators and data management software. The end result is a solution that is capable of labeling wide ranges of package sizes with multiple unique labels at high throughputs.

Fast™ Label Can Be Easily Configured To Interface With:

- Inbound Scanner
- Printer/Applicator(s)
- Outbound Verification Scanner
- Controls Hardware and Software
- In-motion Scale (Optional)
- Light Curtain or Rangefinder (Optional)
- Dimensioners (Optional)

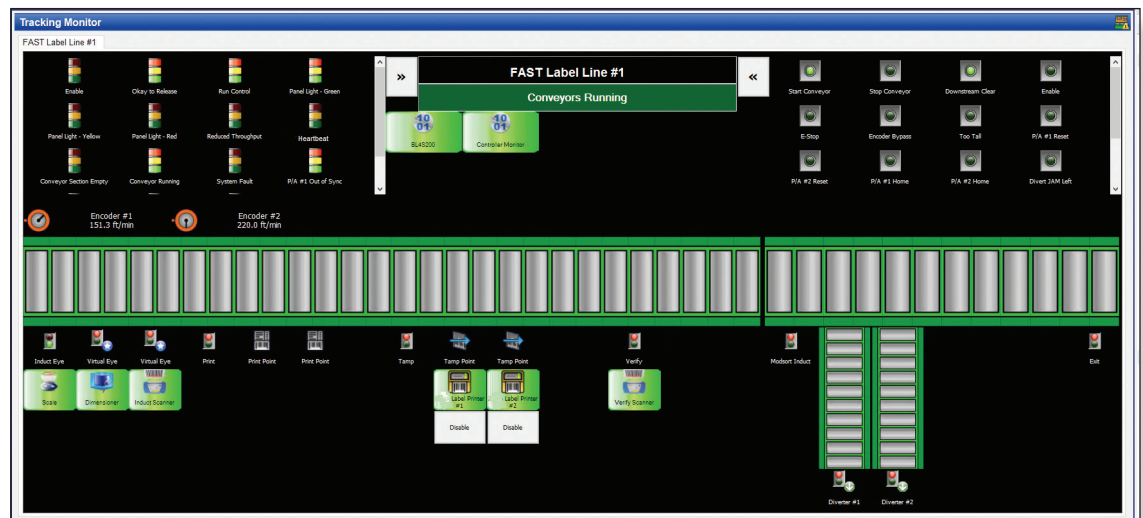
FAST™ Label Will Support Either Of Two Data Flows:

- Variable label field data that will be compiled by **FAST™** Label using preloaded label formats
- Formatted label print strings using common label formatting languages.

Label formats can be designed as a service by SNS or by the end-user using WYSIWYG label design software.

FAST™ Label Reports The Following:

- Tracking Line and Printer/Applicator Statistics
- Tracking Statistic Reports
- Exception Processing Station



Features & Benefits:

- Supports up to 9 printer applicators and multiple scanners
- Label wide range of carton sizes and range of stroke
- Front, side, top or bottom apply labels
- Up to 200 packages per minute
- User-friendly setups for all print and apply system parameters
- Flexible off-the-shelf control architecture
- Configurable system controls and shutdown threshold settings
- User-friendly setups for all input/output setup and device setup
- Seamless enterprise integration
- Real time statistics allow for improved operation efficiency
- Hardware encoder that can compensate for conveyor speed
- Our exclusive tracking software will guarantee label accuracy and reliability
- Multiple labels per carton/item
- Variable placement of label(s)
- Support for all OEM print Engines
- Support for wide variety of Label Printer Applicators
- FAST Label can run as a Windows Service on a PC or Server (physical or virtual).
- High Availability (Microsoft Clustering)

FAST™ Label Applications:

- Inbound receiving
- Carrier labeling, shipping and manifesting
- In-motion weighs and label
- Order fulfillment and price labeling
- Compliance labeling
- Manufacturing product/content labeling and verification

Label Formats:

- Unlimited number of formats
- Customer provided or FAST Label hosted